

E.C. HUSSEY - CO., ST. LOUIS.

DENVER CITY AND AURARIA.

Part of

*E. B. Morgan
4/9-1903
2/
Denver
Colo*

DENVER CITY

AND

AURARIA,

THE

COMMERCIAL EMPORIUM

OF THE

PIKE'S PEAK GOLD REGIONS

IN

1859.

E. B. Morgan
Denver
Colo

4/9-1903
21

DENVER CITY

AND

AURARIA,

THE

COMMERCIAL EMPORIUM

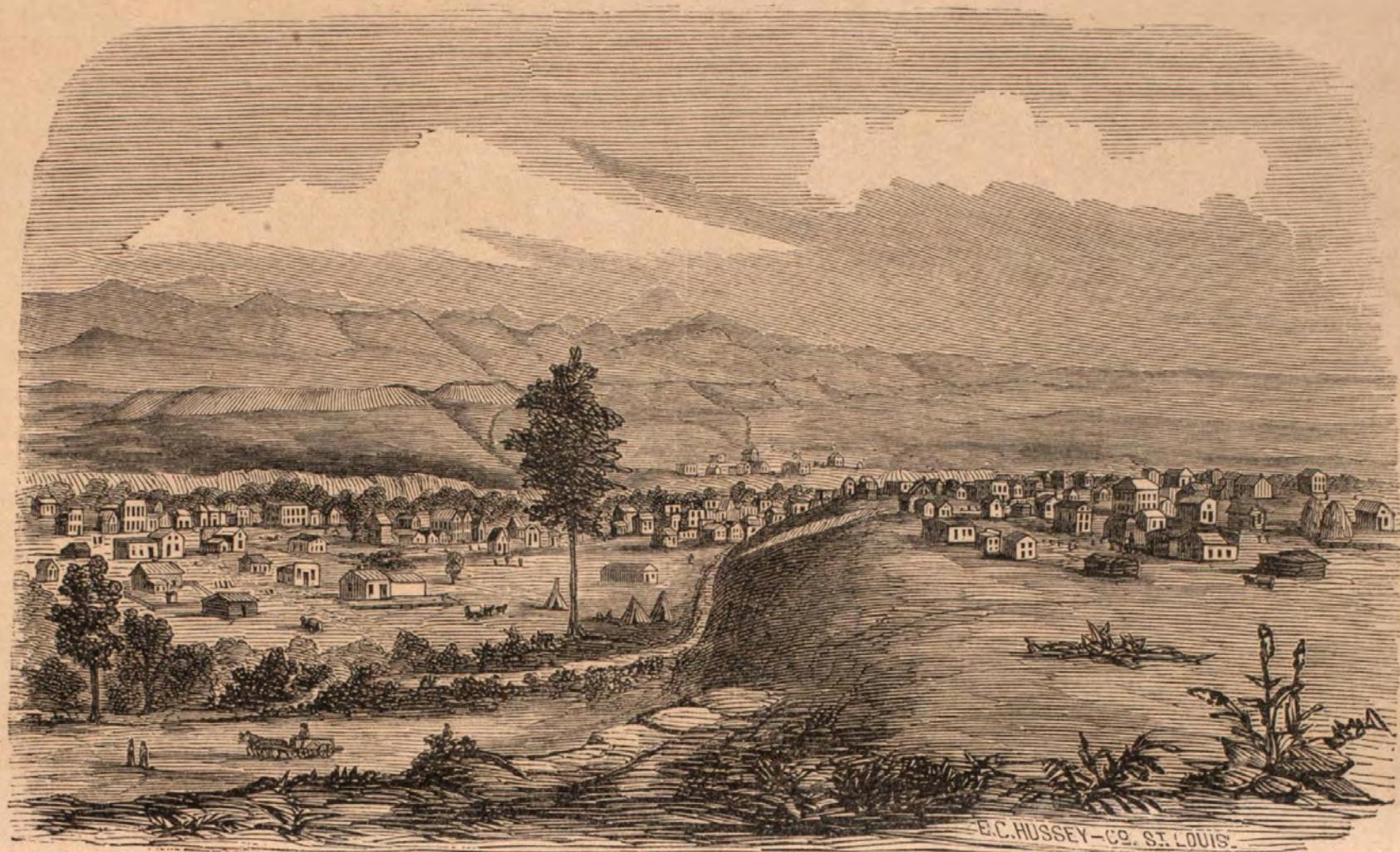
OF THE

PIKE'S PEAK GOLD REGIONS

IN

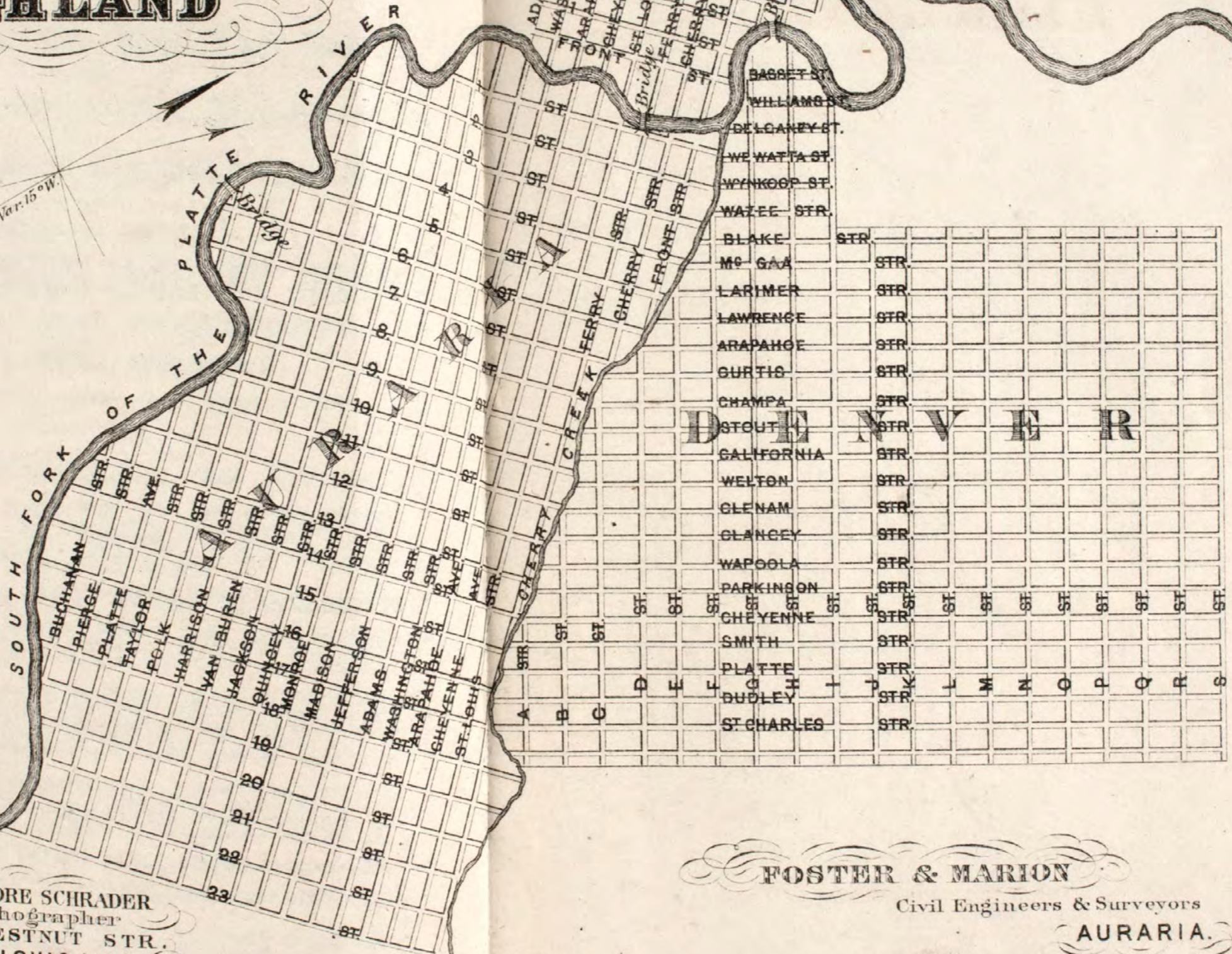
1859.

As



Part of DENVER CITY AND AURARIA.

MAP OF
WEST WELLS, AURARIA
 AND
HIGHLAND



THEODORE SCHRADER
 Lithographer
 No 7 CHESTNUT STR.
 ST. LOUIS, MO.
 Maps of Cities and Real Estates,
 Bonds, Shares, etc. etc.
 done in the finest style at reasonable rates.

FOSTER & MARION
 Civil Engineers & Surveyors
AURARIA.

A. E. PIERCE.

WM. GRAHAM.

**A. E. PIERCE & CO.,
BOOKSELLERS AND NEWS DEALERS,
Auraria and Denver City, Jeff. Terr.,**

Keep constantly on hand and receive Weekly by Express, **NEWSPAPERS** and **PERIODICALS** from all parts of the United States.

Subscription received to any Newspaper or Magazine in the States, and will deliver them regularly to subscribers: also, a complete Circulating Library.

News dealers at the Mines furnished with Papers by the dozen and on liberal terms.

Give us a call, all ye that want to learn the latest news.

J. H. MING,

WHOLESALE AND RETAIL DEALER IN

**GROCERIES, PROVISIONS,
HARDWARE, &c.,**

DENVER CITY, JEFF. TERR.

D. P. WALLINGFORD.

JOSEPH MURPHY.

WALLINGFORD & MURPHY,

Wholesale and Retail Grocers,

LARIMER STREET,

Between F and G,

DENVER CITY.

C. A. LAWRENCE.

C. R. SUMMERS.

LAWRENCE & SUMMERS'

Livery, Feed and Sale Stable.

Having completed our large and well protected Stable, we are now prepared to board all kinds of Stock by the day and week.

Horses, Mules, and Ponies for hire.

Stock of every description bought and sold on Commission.

DENVER
NO. J. REITH
Empire
BLA
R.
Saloon
Attorne
D
THOS. O. BOGGS.
BO
HARDWA
I
Blake
5*

CURRIER'S
GREAT SKY-LIGHT AMBROTYPE GALLERY,

NORTH SIDE OF



MARKET SQUARE,

ST. JOSEPH, MO.

Every description of Pictures taken in the highest style of the Art and at reasonable rates.

Emigrants to the Gold Mines are specially invited to call and examine specimens.

D. W. CURRIER.

ALBRECHT & HUBER,
WATCHMAKERS & JEWELERS,



WATCHES, CLOCKS, MUSICAL BOXES,

GUNS, RIFLES,
PISTOLS, AND JEWELRY,

Of every description, Repaired and Warranted,

NORTH MARKET SQUARE,

(Third door west of the corner of Second street,)

ST. JOSEPH, MO.

OLD I

Buchanan

INSURA

ST. J

A well known Compa
 arrangements to purch
 a miner the value of t
 of the United States, or
 eds, whenever desired
 States, or Europe.
 H. Barksdale & Co., S
 land, Kentucky; and
 Press,

A. BE

B A M

DEAL

Second street

TIONERY, E

WOOLWORTH

C. C. WOOLWO

S. B. WOOL

WOC

GENERAL BOOKSELL

first class facilities at all
 any required quantity. Ou
 est dates, from all parts of
 to the wants of the Miner

CHICAGO, BURLINGTON AND QUINCY RAILROAD.



THE

Shortest and most Direct Route

From CHICAGO, MILWAUKEE, DETROIT, TOLEDO, CLEVELAND, BUFFALO, and the NORTH, EAST and WEST generally, to BURLINGTON, PEORIA, GALESBURG, QUINCY; and from all points in Western and Central ILLINOIS, to IOWA, MISSOURI, KANSAS, and NEBRASKA, and all points in the

PIKE'S PEAK GOLD REGIONS.

Close connection with the HANNIBAL AND ST. JOSEPH RAILROAD, and GREAT OVERLAND EXPRESS to DENVER CITY, AURARIA, SALT LAKE CITY, and CALIFORNIA.

☛ Two Passenger Trains each way. Extra Trains will be run if required.

☛ Ferries across the Mississippi connect with the road at Quincy and Burlington.

☛ Freight carried at the lowest rates.

☛ Tickets for sale at all the principal Railroad Offices.

C. G. HAMMOND,
General Superintendent, Chicago, Ill.