

Vol. III.—No. II.

25 Cents.

THE
Chess Monthly,

EDITED BY

PAUL MORPHY & DANIEL W. FISKE.

FEBRUARY, 1859.



NEW YORK:
W. M. C. MILLER,
49 NASSAU ST., BETWEEN LIBERTY ST. AND MAIDEN LANE.
LONDON:—TRÜBNER & CO.,
50 PATERNOSTER ROW.

CONTENTS OF NUMBER II.

	PAGE
1. THE PROFESSOR'S DAUGHTER,	33
2. MODELS OF DEFENCE IN THE EVANS GAMBIT,	45
3. GAME CXC.—Between Morphy and Anderssen,	49
4. " CXCI. " " "	51
5. " CXCH. " " "	53
6. " CXCHL. " " "	54
7. " CXCIV. " " "	56
8. " CXCV. " " "	58
9. " CXCVI. " " "	59
10. " CXCVII. " " "	60
11. " CXCVIII. " " "	62
12. " CXCIX.—Between Philadelphia and New York	63
13. PROBLEM CXXXVII.—By Loyd of Florence	66
14. " CXXXVIII.—By Gardner of Brooklyn	66
15. " CXXXIX.—By Loyd of Florence	67
16. " CXL.—By Johnson of Owego	67
17. " CXLII.—By Schurig of Leipzig	68
18. " CXLIII.—By Potter of Salem	68
19. " CXLIII.—By Barnett of New York	69
20. " CXLIV.—By Brown of St. Louis	69
21. MISCELLANEA ZATRIKIOLÓGICA The Chess-Kings of 1851 and 1859.	70
22. CHESS MONTHLY CORRESPONDENCE	71.

NOTICES.

THE EIGHT EXTRA PAGES of this number are filled with the games of the Morphy-Anderssen Match instead of the specimens of blindfold play which will be given in a future number.

In playing over the games in the *Chess Monthly* it will be remembered, that the First player is always supposed to make use of the WHITE pieces.

The literary matter of this Magazine is written entirely by D. W. F. He alone, therefore, is responsible for any expressions of praise used in regard to P. M's play.

THE MORPHY CHESSMEN.

MANUFACTURED BY T. FREER.

These new, substantial, and elegant CHESSMEN are now for sale, and may be ordered through the Publisher of the "Chess Monthly."

Club Size,	\$ 5.00
Parlor Size,	4.00

They are of the sizes proper, respectively, for the Club or Drawing-room. They are of a fine composition of Iron, which secures,
FIRST:—*Weight*—They are not continually being upset on the board, nor dropped on the floor.

SECOND:—*Strength*.—Players will not find their King without a head nor their Knight in two unmanagable pieces.

THIRD:—*Completeness as to number*.—It is next to impossible to lose one of the pieces. Orders, accompanied by the money, sent to W. MILLER, 49 Nassau Street, New York, will receive prompt attention.

CHESS MONTHLY FOR 1857.

In consequence of frequent enquiries for the Volume of the *CHESS MONTHLY* for 1857 which has been for some time *out of print*, it is proposed to reprint it, if a sufficient number of subscribers can be obtained to warrant the undertaking. The publisher proposes, therefore, to re-issue that volume if 300 names are sent in by the 1st May next. The price will be \$3.00 a copy, bound in cloth, and the book will positively be furnished to subscribers only, as the edition will be limited to the number of names received. The Volume could be ready by the 1st of July.

GAME CXCHL.—RUY LOPEZ OPENING.

FOURTH GAME BETWEEN THE SAME PLAYERS.

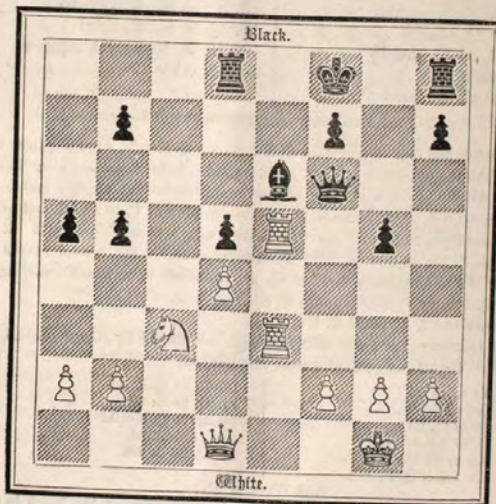
ANDERSSSEN.

1. P. to K. fourth
2. Kt. to K. B. third
3. B. to Q. Kt. fifth
4. B. to Q. R. fourth
5. P. to Q. third
6. P. to Q. B. third
7. B. to Q. B. second
8. P. takes P.
9. P. to K. R. third
10. Castles
11. P. to Q. fourth
12. P. takes P.
13. Kt. to Q. B. third
14. B. to Q. Kt. square
15. P. to Q. R. third

MORPHY.

1. P. to K. fourth
2. Kt. to Q. B. third
3. P. to Q. R. third
4. Kt. to K. B. third
5. B. to Q. B. fourth
6. P. to Q. Kt. fourth
7. P. to Q. fourth
8. Kt. takes P.
9. Castles
10. P. to K. R. third
11. P. takes P.
12. B. to Q. Kt. third
13. K. Kt. to Q. Kt. fifth
14. B. to K. third
15. Kt. to Q. fourth

way save the game ?



SOLUTIONS TO PROBLEMS IN No. I.

PROBLEM CXXXII.

1. R. to K. sixth
2. B. to K. seventh
3. Kt. or Q. Mates

1. P. or Kt. takes R. or Q. to Q.
2. Any move [fifth (A., B., C., D.)

(A.)

2. Q. to Q. R. fourth (ch)
3. Q. takes B. P. Mate

1. B. to Q. R. third or fifth
2. K. to B. fourth

(B.)

2. R. to K. fifth.
3. Q. Mates

1. R. takes Kt. or R. to K. fourth
2. Any move

(C.)

2. Q. to R. second (ch.)
3. B. to B. second Mate

1. Kt. takes Kt.
2. K. to B. fourth

(D.)

2. R. to K. fourth (check)
3. Kt. to K. third Mate

1. Q. to K. Kt. eighth, R. takes B. [&c.,
2. Q. to Q. fifth.

PROBLEM CXXXIV.

1. Q. to Q. Kt. third
2. B. to Q. Kt. second
3. B. to Q. B. sixth Mate

1. P. takes Q. (A.)
2. K. takes Kt. (B.)

(A.)

2. B. to Q. fourth
3. Kt. Mates

1. P. to B. sixth
2. P. to B. seventh

(B.)

3. B. to R. sixth Mate

2. K. to B. fifth

PROBLEM CXXXV.

1. R. to B. seventh
2. Q. to B. sixth (check)
3. Kt. to B. fourth (mate)

1. Kt. to Kt. third (A, B, C)
2. P. takes Q.

(A.)

2. Kt. takes Kt.
3. Kt. to B. fourth (mate)

1. Kt. to K. fourth
2. K. moves

(B.)

2. Q. to K. B. square
3. Q. or Kt. mates

1. K. to Q. fourth
2. Any move

(C.)

2. Q. to Kt. seventh
3. R. or Kt. mates

1. K. to B. second
2. K. moves

PROBLEM CXXXVI.

1. P. to B. sixth
2. Q. to K. seventh (ch.)
3. Q. or B. mates

1. K. to K. third (A.)
2. K. moves

(A.)

2. Q. to K. 3d or 7th, or Q. B. 7th
3. Q. Mates.

1. K. to Q. fourth
2. K. moves

THE CHESS MONTHLY FOR 1859.

NEW-YORK, February, 1859.

The third volume of the CHESS MONTHLY commences with the January number. It will be continued during the year under the editorial management of Mr. PAUL MORPHY and Mr. DANIEL W. FISKE. Mr. MORPHY'S games, now universally acknowledged as classical master-pieces of chess strategy, will occupy a large space, and among the prominent features of the coming volume will be the publication of his European matches, with full notes from his own pen.

A finely engraved and accurate Portrait of Mr. Morphy, suitable either for framing or binding will accompany an early number of the third volume. The Publisher is determined to make this the most correct likeness yet published of the Chess Champion of America.

With such inducements as are here offered the Publisher confidently believes that the CHESS MONTHLY will merit in the future the same abundant patronage it has received in the past.

The Terms of the *Chess Monthly* are Three Dollars yearly, payable in advance. Clubs of two persons will be supplied at five dollars a year and of five persons at ten dollars. The Second Vol., neatly bound in cloth, can now be obtained: price \$3.50. A Specimen Number sent on receipt of 25 cents in postage stamps.

Subscriptions are also received and single copies furnished by T. J. Crown, 699 Broadway New York, by Messrs. A. Williams & Co. 100 Washington Street Boston, by Geo. A. Carnes, 134 Lake Street, Chicago, and by H. E. Church, Post Office News Stand, Cincinnati.

Communications may be addressed to the CHESS MONTHLY, 49 Nassau Street, New-York.

WM. C. MILLER.

THE ELEGANT PORTRAIT OF PAUL MORPHY will be issued with the number for March.

Correspondence of the Problem Department.

J. T., New Orleans.—Nos. 2, 4 and 6 are accepted.

W. S., Milwaukee.—The key-move of end-game No. 1, p. 300, vol. II, is: 1. P. to Q. 8, Queening. If Kt. take Queen, White plays 2. P. to K. 8, Queening, mating next move.

R. G. G. (East Cambridge,) and J. W. (Syracuse).—Approved; and will be given in due course.

S. N., Bolton.—One of them in the next number.

Tan, New York.—Patience.

J. C. (Boston,) and C. C. M. (Winona).—Communications have been sent by post.

Anti-Staunton, New York.—Suppose Black play K. to K. 4, in answer to your proposed move? One would expect a *lady relative* to be less antagonistic.

F. Mc. B., New York.—Mate can be given in two moves.